

## Cataract

Intraocular lens surgery

**For multi-focal lenses (Not allowed for Class 1/3)**

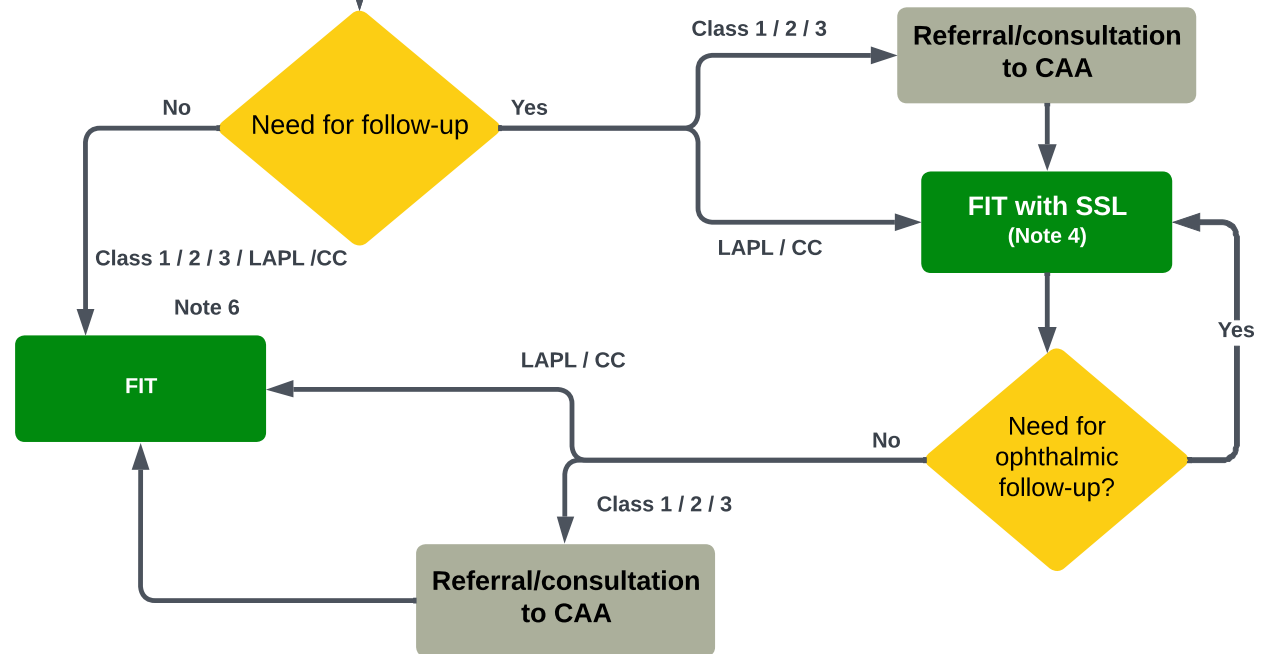
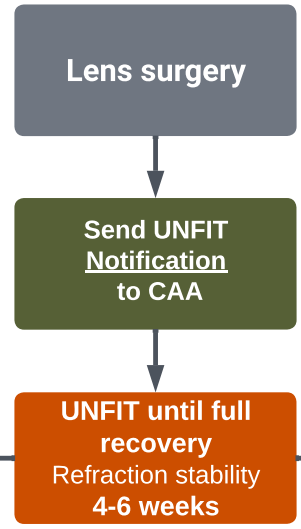
**Ophthalmic examination requirements** (Note 1)

- No Post-operative complication?
- Refraction stability achieved
- Glare sensitivity (Note 2)
- Colour vision (Note 5)
- Visual acuities (near, intermediate and distant vision)
- Refraction measurements
- Follow-up plan/further examination needs?

**For mono-focal lenses (All classes)**

**Ophthalmic examination requirements**

- No Post-operative complication?
- Visual acuity (near, intermediate and distant vision)
- Refraction measurements
- Colour vision (note 3)
- Night vision assesment (note 3)
- Follow-up plan/further examination needs?



### NOTES

- (1) Evaluation is undertaken by an ophthalmologist with aeromedical knowledge/experience.
- (2) For Class 2 / LAPL only
- (3) For Class 1 /3 / CC (Class 2 only if IR/night rating./LAPL only night rating)
- (4) Ophthalmic specialist examination according to recommendation.
- (5) For Class 1 /3 / CC (Class 2 only if IR/night rating./LAPL only night rating)
- (6) For Class 3 ATCO.MED.B.070 (g) is approved as FIT by AMS if AMC1 ATCO MED.B.070 (i)(2) er met.

**PROVIDE DOCUMENTATIONS FOR ALL STEPS**